



Finnish Federation
of the Visually Impaired



TOGETHER WE SEE MORE

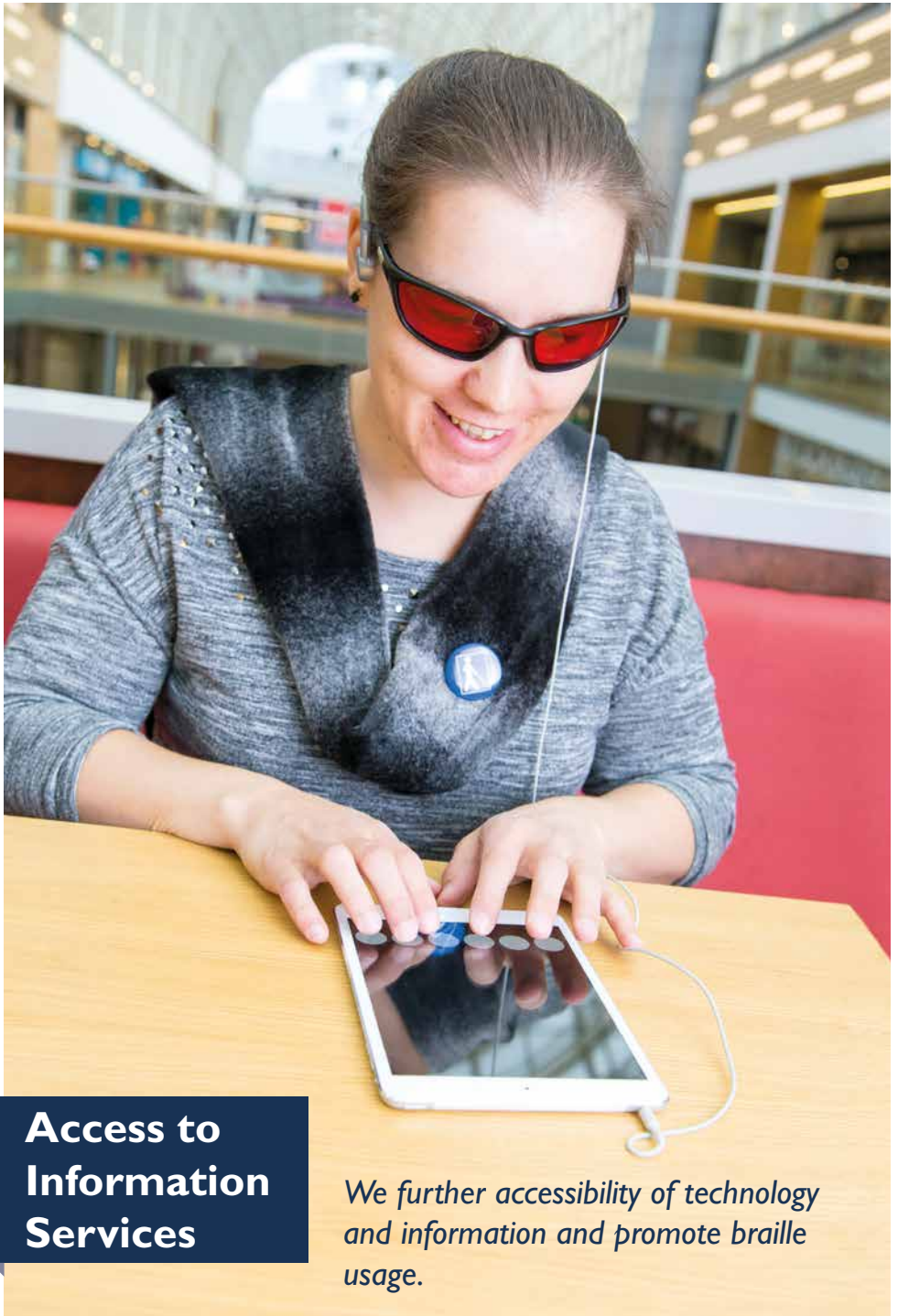
Finnish Federation of the Visually Impaired (FFVI) is a reliable expert organization of the persons with visual impairments, promoting participation, equality and active citizenship of blind and low vision people.

Emphases of our work are

- providing special services for persons with visual impairment.
- protecting the interests of persons with visual impairment.
- supporting visually impaired people in social welfare issues all over Finland.
- removing obstacles to make information, digital services and built environment accessible.
- supporting the education and employment of visually impaired people.
- producing information on visual impairments.



This symbol signals its user has a visual impairment.



Access to Information Services

We further accessibility of technology and information and promote braille usage.

The Federation in a nutshell

Finnish Federation of the Visually Impaired was established in 1928 as an advocacy and service organisation of the Finnish visual impairment associations. As members, we have 14 regional and 10 nationwide interest organizations. Our 100 local associations and clubs offer activities and peer support for their 10 500 members.

The headquarter of the FFVI Group, located in Helsinki, is the Iiris Activity and Service Centre. Iiris Centre houses our rehabilitation services, vision aids shop Aviris, our braille printing house and audio production studios. The FFVI Guide Dog School, located in Vantaa, breeds and trains guide dogs for visually impaired people.

The property company Kiinteistö Oy Iiris and the non-profit distributing companies Annanpura Oy and Sokeva Oy also form a part of the FFVI Group.

Our annual budget is 15 million euros and we have 150 employees.

This is how we fund our activities

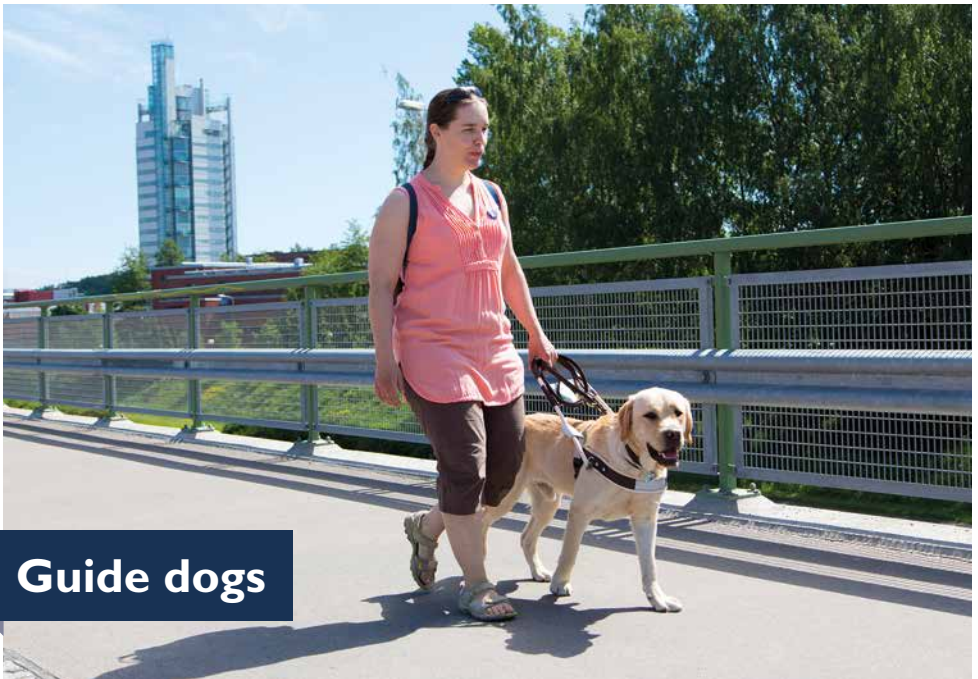
- Sales of services and products (40 %)
- Funding from Finland's Slot Machine Association RAY (30 %)
- Donations from individuals and organizations (20 %)
- Subsidies and allowances from the state (10 %)





**For all
ages**

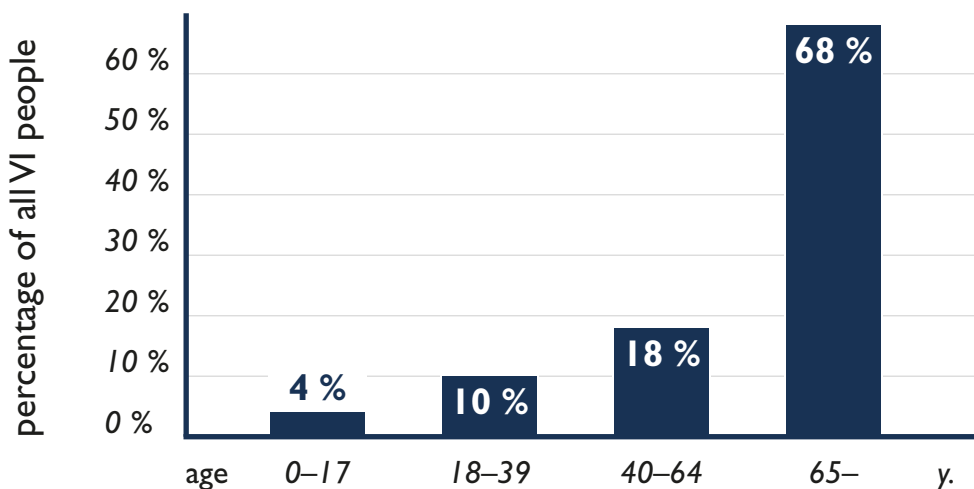
Rehab-liris provides rehabilitation services for visually impaired persons of all ages.



Guide dogs

The FFVI Guide Dog School breeds and trains guide dogs. Each year 25 new guide dogs are given to visually impaired dog users.

There are 50 000—60 000 persons with visual impairment in Finland. The majority of these people are over 65 years of age.



Finnish Federation of the Visually Impaired

Mailing address: PO Box 30, FI-00030 IIRIS, Finland
Street address: Marjaniementie 74, 00930 Helsinki
+358 9 396 041 | www.nkl.fi | nkl@nkl.fi

